

Genesee Valley Hiking Club Newsletter

Message from the President:

Larry O'Heron

Following the elections at the Annual Get-Together at Mendon Ponds last October, let me present the members of the GVHC Executive Committee.

=====

Executive Committee

- President: Larry O'Heron
- Vice President: Tom Kolankiewicz
- Secretary: Patty Mangarelli
- Treasurer: Nina Tracy
- Immediate Past President: Ann Bayley
- Membership: Michelle Barno
- Hiking: Derek Price
- Trails Maintenance: Ryan Bean
- Social: Iris Raiman
- Info Tech: Larry O'Heron
- March of Time: Diane Fulkerson
- At-Large: Ruth Teitel (& Social Co-chair)
- At-Large: Alicia Collins

=====

Newsletter Availability

Find this newsletter and earlier editions at:
<https://gvhchikes.org/Newsletters.html>

=====

Feb 18 Get-Together

Keep your calendars open for the GVHC Winter Get-Together. Our Social Committee of Iris R and Ruth T are busy making plans for our cold weather post-hike party at Mendon Ponds. More to follow later.

=====

Important Safety Reminder!

Winter weather is upon us and it's good practice to check the Comments Section in MeetUp.com of any hike that you're signed up for - - PRIOR to leaving home for the hike.

Hike Leaders use the Comments Section to communicate: confirmation that the hike is still "on"; trail conditions; equipment suggestions; parking lot conditions; and other relevant information about the hike.

=====

Rochester, NY Hidden Winter Gems: Lesser-Known Hiking Trails

(Chat-GPT assisted)

Winter in Rochester transforms our wonderful parks into a serene wonderland. GVHC offers a unique and peaceful experience for hikers.

While many may flock to popular trails, there's something enchanting about being

on the the lesser-known gems that lie off the well-hiked paths.

Let's take a look at some lesser-known hiking trails that promise solitude, breathtaking scenery, and a chance to reconnect with nature away from the crowds.

Pine Woods Trail (1.0 mi)

- Located in Mendon Ponds Park, the Pine Woods Trail winds through a quiet forest adorned with snow-covered pines. Are you wanting some solitude under the pines as the calming sound of the wind whispers through the trees?

Durand Lake and Trott Lake Trails at Durand Eastman Park (2.0 mi)

- This pair of trails often remains overlooked. In winter. The combination of ice-cover and water makes the twin "lakes". Circle the lakes with the added allure of solitude.

Tinker Nature Park Trail (1.2 mi)

- This is a very popular area for birding, running, and walking, so you'll likely encounter other people while exploring. You'll need to leave pups at home — dogs aren't allowed on this trail.

Black Creek Park's Wetland Trail (2.1 mi)

- This is an easy walk over gently rolling terrain. Portions of this trail pass through spruce, black walnut, beech, staghorn sumac and hickory trees. White tailed deer may also be seen.

Ganargua Creek Meadow Preserve

- This preserve, located a bit outside Rochester, offers a pristine winter hiking experience. Traverse through open meadows and along Ganargua Creek for a peaceful escape from the winter hustle.

Webster Arboretum Winter Exploration (0.6 mi)

- Popular birding, hiking, and walking, you can still enjoy some solitude during quieter times of day. Dogs are welcome, but must be on a leash. Explore the peaceful trails adorned with snow-covered trees and discover the beauty of the diverse plant life that endures the winter chill.

Conclusion:

As winter blankets Rochester in snow-covered beauty, these lesser-known trails are for those seeking a more intimate connection with nature. Whether you're a seasoned hiker or just starting your winter adventures, exploring these hidden gems will unveil the true magic of Rochester's winter wonderland. Embrace the tranquility, the crisp winter air, and the untouched beauty of these trails that remain Rochester's best-kept winter secrets.

=====

Member Stories

“Under the Balkan Sun”

An Adventure Behind the Former “Iron Curtain “

By Nancy Holley

Photos by Nancy Holley

During October 2023, Donna Richardson and I were privileged to get a glimpse of life in post Soviet Eastern Europe.

An 11 day cruise on the lower Danube took us into 5 countries. We traveled through Hungary, Croatia, Serbia, Bulgaria and Romania!



Coast of Serbia

Beautiful baroque buildings and grandiose cathedrals (some containing nuclear

bunkers from the Cold War) contrasted with Roman ruins and medieval fortresses. One of the fortresses was entirely preserved with original 14th century towers and battlements.

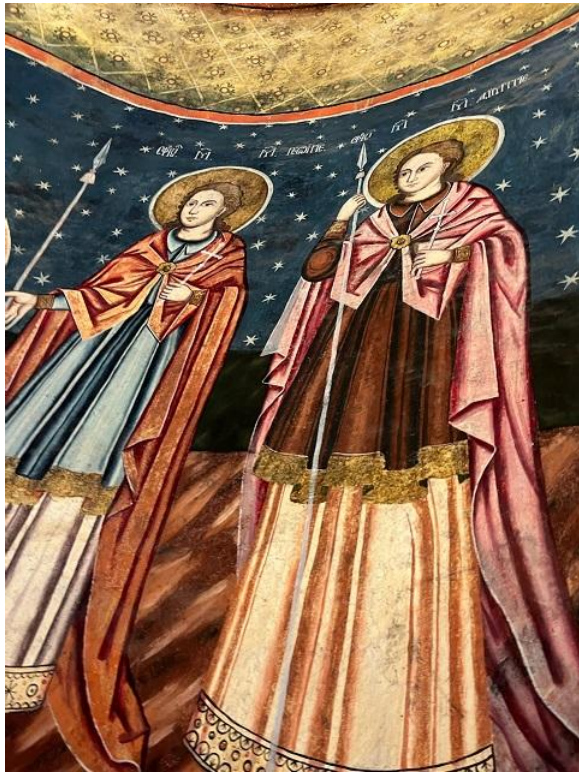


Nancy H, Unk & Donna R

Another highlight was an Orthodox Church from 1600's. Gorgeous hand painted

frescoes and icons were backdrop for an acapella choir concert of melodious chanting.

Rural villages with stone cottages and red tile roofs appeared almost surreal with neatly fenced tiny yards incorporating vineyards, fruit trees and chickens!



Devout young people kissed the feet of the statues

Horse drawn wagons and old time haystacks gave an almost biblical feel to the agricultural region. The rich farmland is still not fallow in some places due to landmines intact from the turbulence of war in the '90's.

Older folks readily share how they suffered under communism until 1989, but younger generations have no memory of anything but free market economy.

It was an eye opening experience with heart breaking history that will be hard to forget!



=====

Support GVHC

This is a Genesee Valley Hiking Club event. Genesee Valley Hiking Club (GVHC) events are free, but we do ask that you consider becoming a member for merely \$10 a year.

Membership dues help support administrative costs, the costs of the meetup site and rental of a lodge or other facility for a picnic or winter event.

Please see:

<https://gvhchikes.org/JoinUs.html>

=====

